

DRM-10A™

Automatic Digital Micro-Ohmmeter

The DRM-10A™ is a fully automatic digital micro-ohmmeter, auto-scale selecting up to 10A DC for ultra-accurate resistance readings from 0.01 $\mu\Omega$ to 200 Ω . Built into a rugged and lightweight case, the DRM-10A™ is the perfect tool for field and laboratory tasks.

Highlights

- Ultra accurate readings, best in class
- Four-lead Kelvin method
- Highly filtered input channels
- Long lasting, rechargeable batteries
- Array of probes available
- Custom probes are available
- Standard & differential operation modes
- Trusted worldwide since 1999
- Very easy to use



Small Package, Big Performances

- DRM-10A™ is a high-quality, well-thought micro-ohmmeter kit that offer high accuracy and portability
- Finally able to confidently measure very low resistance either at job site, or in the lab with consistent results
- With its highly filtered input channels, the DRM-10A™ allows precise measurements even in presence of intense magnetic field
- DRM-10A™, Accurate, Portable and Reliable

Free interactive presentation:



[Click here to schedule](#)



sales@ndbtech.com



ndbtech.com

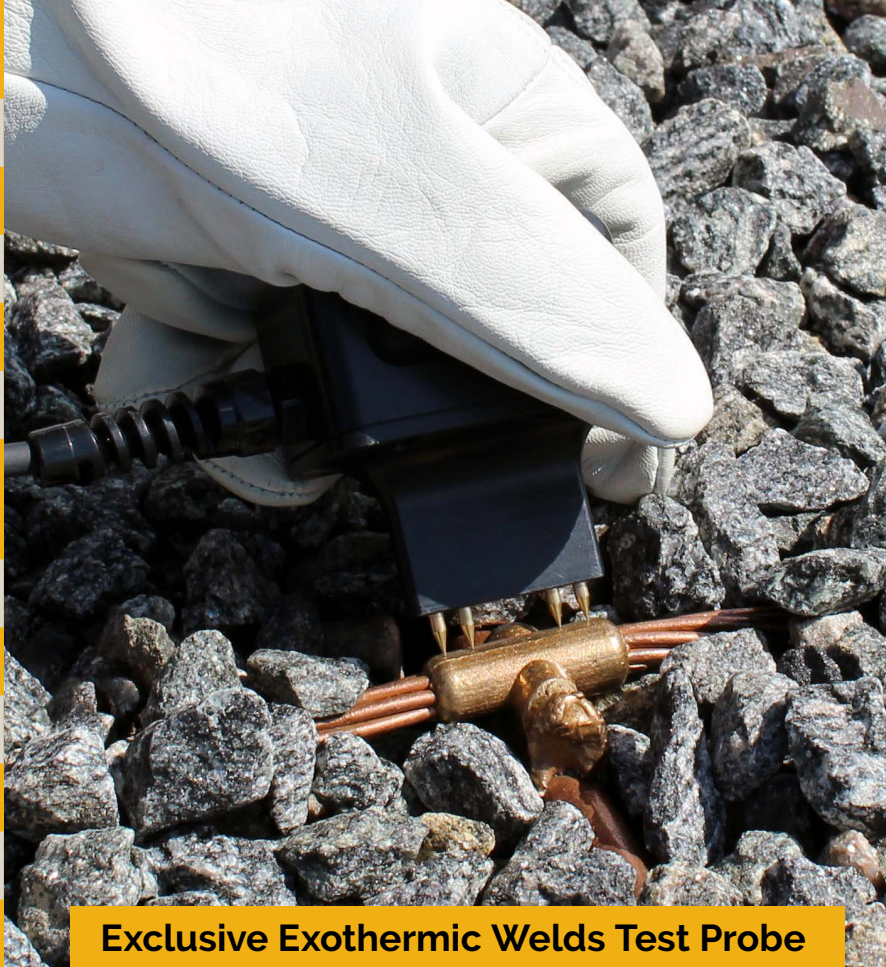
ndb

Technologies



Technical Specifications

Measuring range	0.01 $\mu\Omega$ to 200 Ω
Display	LCD display, 128 x 64 pixels
Current	10A, 250mA, 5mA
Resolution	0.01 $\mu\Omega$
Power Supply	Six AA NiMH batteries
Autonomy	> 12 000 measurements at 10A > 10 000 measurements for the other currents
Operation temperature	-20°C to 50°C (-4°F to 122°F)
Charging temperature	0°C to 50°C (32°F to 122°F)
Storage temperature	-40°C to 50°C (-40°F to 122°F)
Humidity	0 to 95% non-condensing
Weight	0.86 kg (1.9 lbs)
Dimensions	203 x 114 x 51mm (8 x 4.5 x 2 inches)



Exclusive Exothermic Welds Test Probe



DRM-10A™ kit

The DRM-10A™ kit includes the micro-ohmmeter, a set of NiMH rechargeable batteries, a battery charger, a user manual and a calibration certificate.



ELBOW Probe

Paired with the DRM-10A™ and our GET-40™, the GET-ELBOW™ accessory is designed to measure resistance of duck-elbow grounding cable.



Booster Type Clamps

The DRM-4017-35™ booster type clamps are designed for low resistance measurement on various contact type devices. It offers an opening of 35mm (1.37 inches) and a sturdy design suited for field application.



Double Hands Probes

The DRM-4015™ probe kit allows for easy resistance measurement on any surface. Its spring loaded tips provide an unmatched accuracy. Tips are easily swappable if dulled.



Dolphin Type Probe

The DRM-4017-19™ dolphin type clips are designed for low resistance measurement on various contact type devices. It offers an opening of 19mm or 0.67 inches.



Protection Bag

The DRM-4014™ protection bag allows to protect your DRM-10A instrument while working in the field. This rugged bag is fully made of resistant nylon material and is light enough to be worn around the neck.



Cadweld Probe

The DRM-4012™ probe is specifically designed for non-destructive testing of exothermic Cadweld bonds typically found in substations. Its exclusive design



Transportation Case

The BOX-075™ transportation case allows to protect your DRM-10A instrument while working in the field. Fully made of synthetic materials, this case offer plenty of space for all your accessories.